



EIDEIC II

Oscar Ruiz (2nd year student)

Influence of the cartography on the results of two-dimensional hydraulic models

Brief summary



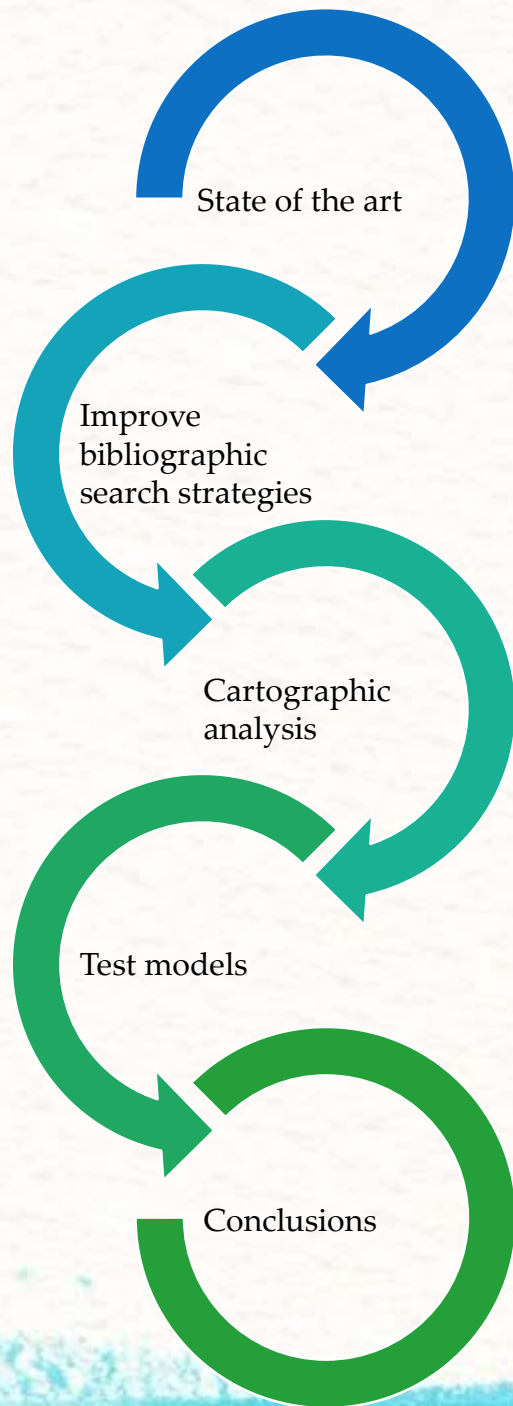
- The use of hydraulic river models is usual in the world
- The influence of the cartography is undervalued
- In other cases, the cartography is so expensive for the project
- What is the minimum cartography precision required?
- Is the satellite data enough?



PDIC progress

- Improve bibliographic search strategies (more/better referencias)
- Convalidate &/or participate in this year “curso de formación transversal” (interdisciplinary education course)
- Looking for a compatible Educative Mobility

Influence of the cartography on the results of two-dimensional hydraulic models

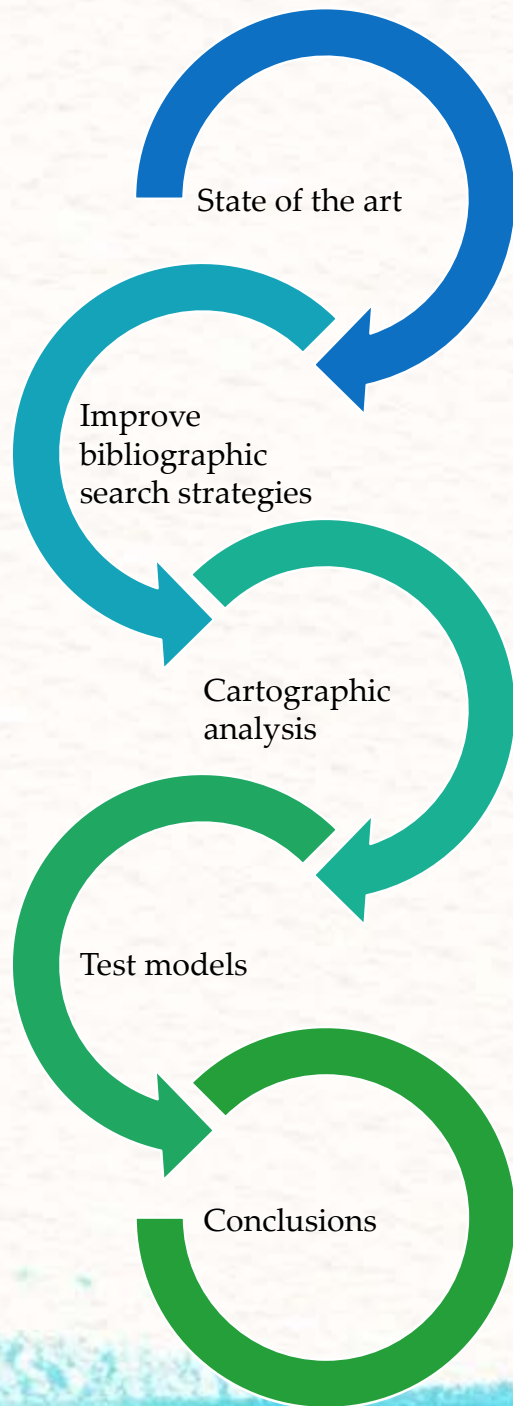




PDIC progress

- Base Model Jalón river finished
- Moved the required training to the first quarter (course opportunity) and delayed of the particular models for the second/third quarter Looking for a compatible Educative Mobility
- Currently selecting the river sections for analysis
- PDIC planning on time

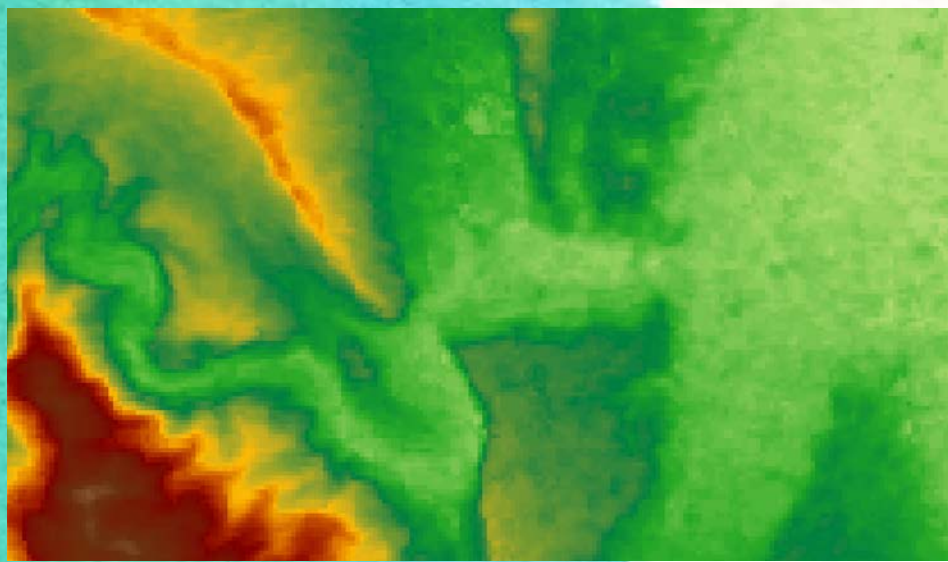
Influence of the cartography on the results of two-dimensional hydraulic models



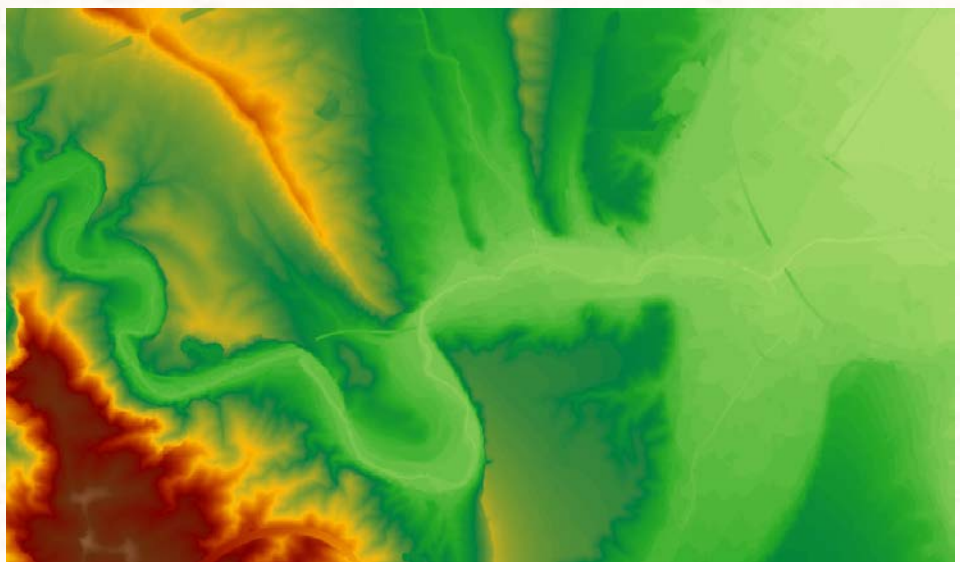
Congress



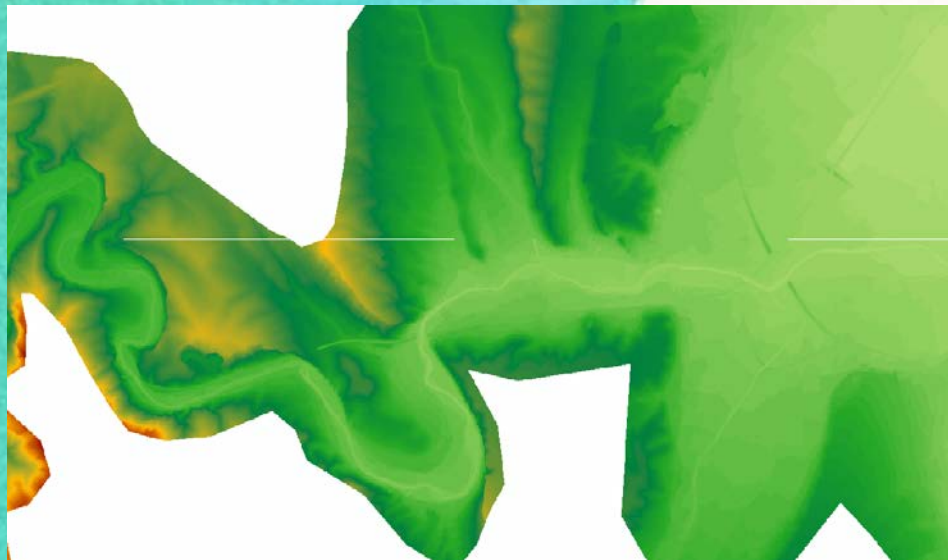
- VII National Congress, V Ibero-American Congress, I International Congress of Civil Engineering. Spanish Association of Civil Engineers.
 - “Análisis de la validez cartografía satelital para su uso en la estimación de zonas inundables”
 - (Satellite Cartography validity analysis for flooding areas estimation)



ASTER



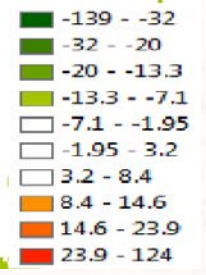
LiDAR 5 m



LiDAR 1m



Level Errors



Comparison between different cartographies