



EIDEIC III

Oscar Ruiz (3nd year student)

Influence of the cartography on the results of two-dimensional hydraulic models

Brief summary

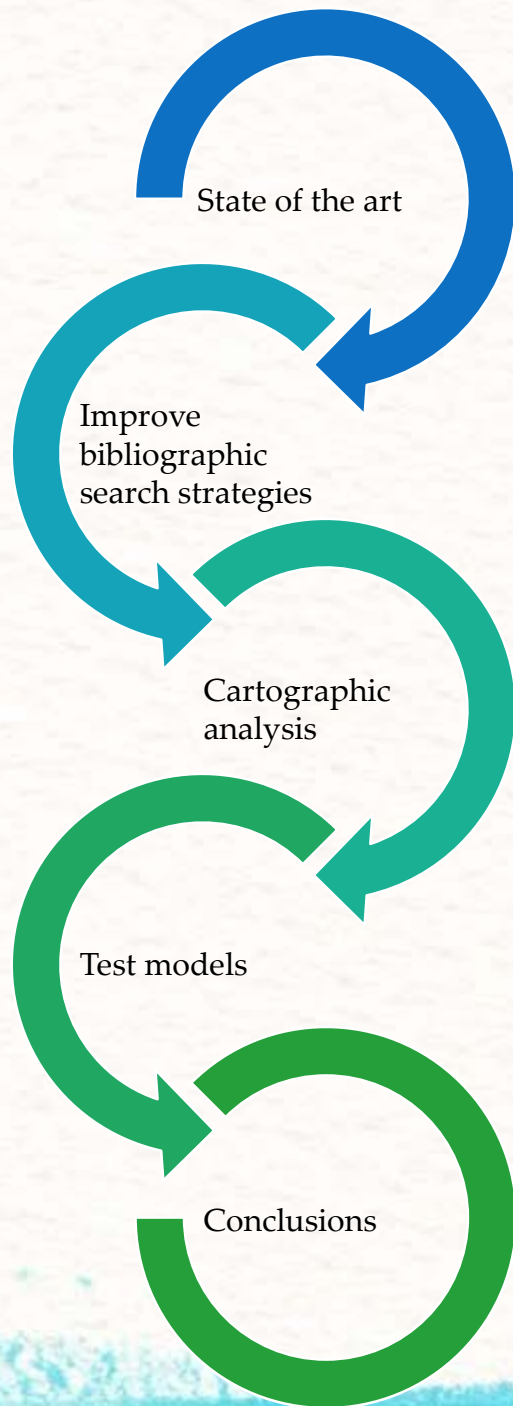


- The use of hydraulic river models is usual in the world
- The influence of the cartography is undervalued
- In other cases, the cartography is so expensive for the project
- What is the minimum cartography precision required?
- Is the satellite data enough?
- Currently developing methods to compare and analyze the difference between satellite data through big data and artificial intelligence techniques



PDIC progress

- Science and Technique
 - Finished bibliographic analysis
- Technology
 - IBER
 - GIS
 - Phyton
 - Others

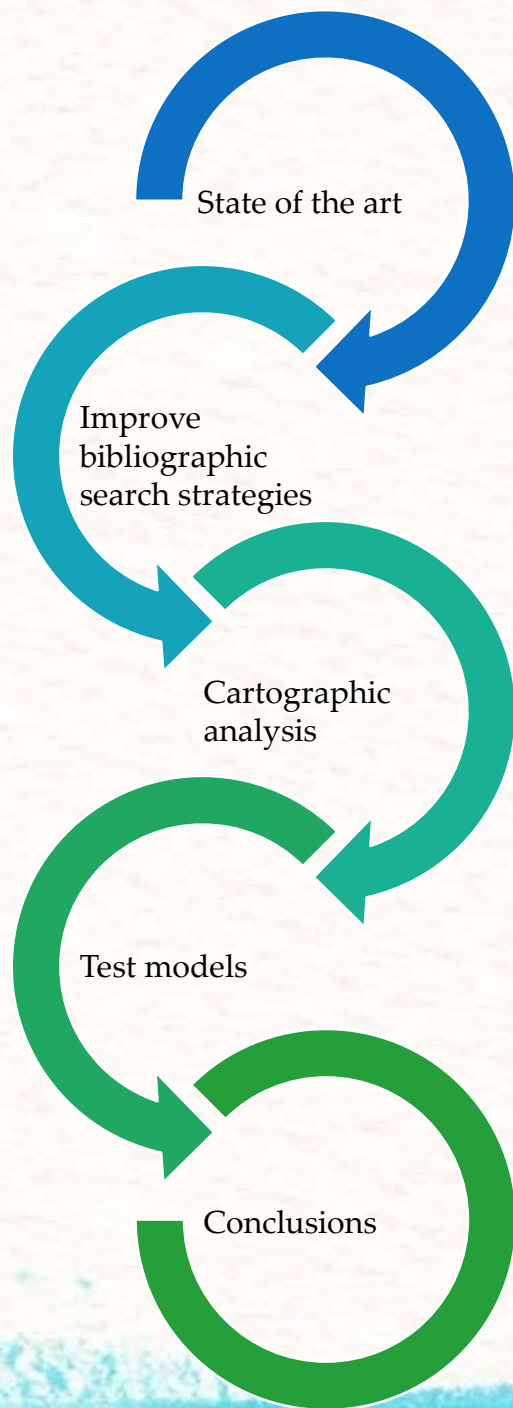




PDIC progress

- Training courses
 - Introduction to computer science and programming using Python
 - Introduction to computational thinking and data science
 - Introduction to Water and Climate
 - Earth Imagery at Work
 - Convalidated first “curso de formación transversal” (interdisciplinary education course)
- Results
 - I Congreso Internacional de Ingeniería Civil titulada “Análisis de la validez cartografía satelital para su uso en la estimación de zonas inundables” (First International Congress of Civil Engineering)

Influence of the cartography on the results of two-dimensional hydraulic models

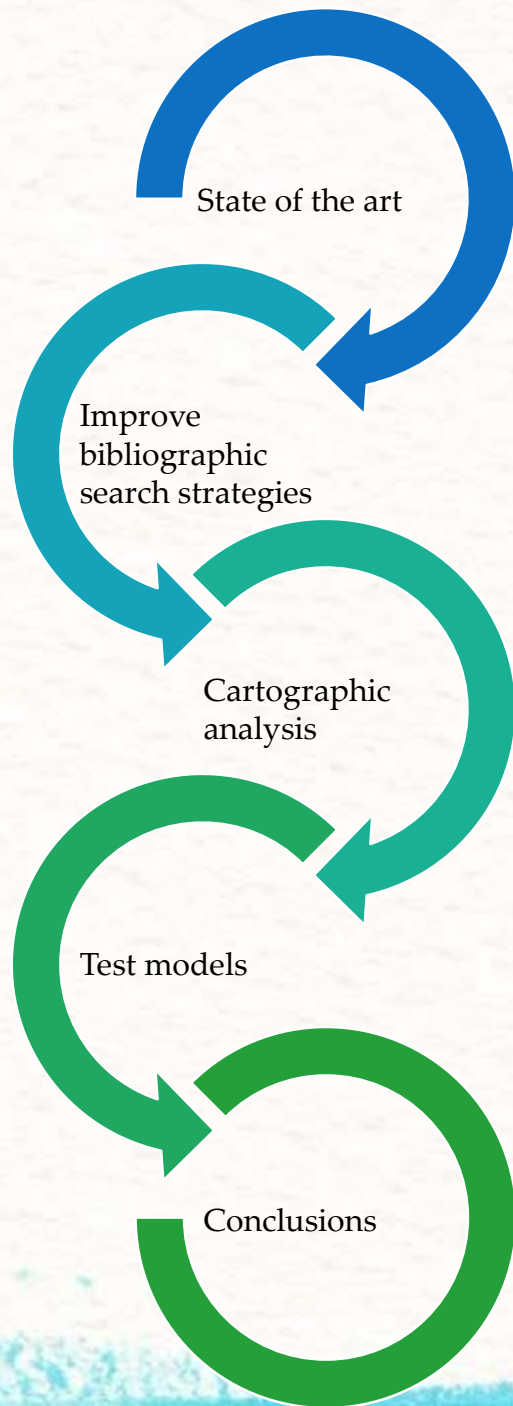


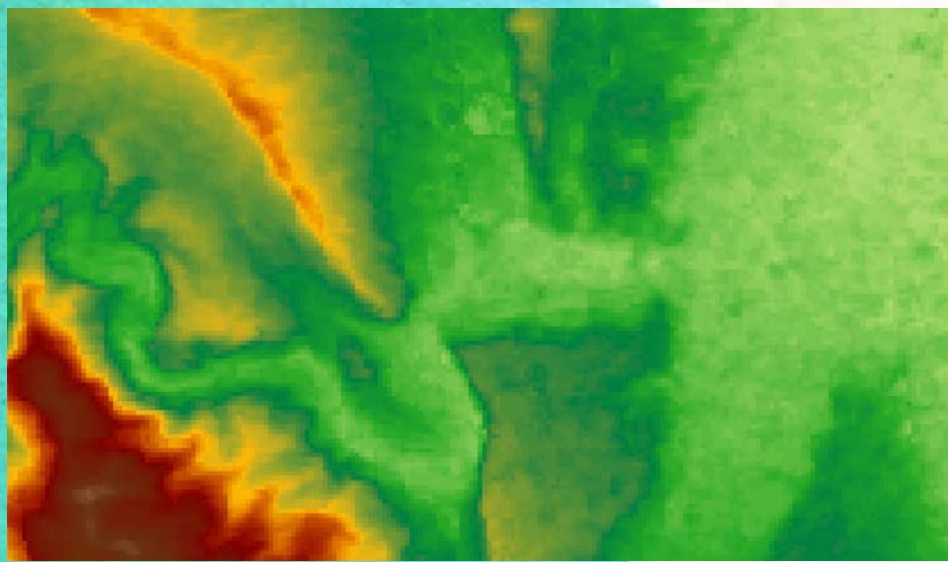


PDIC progress

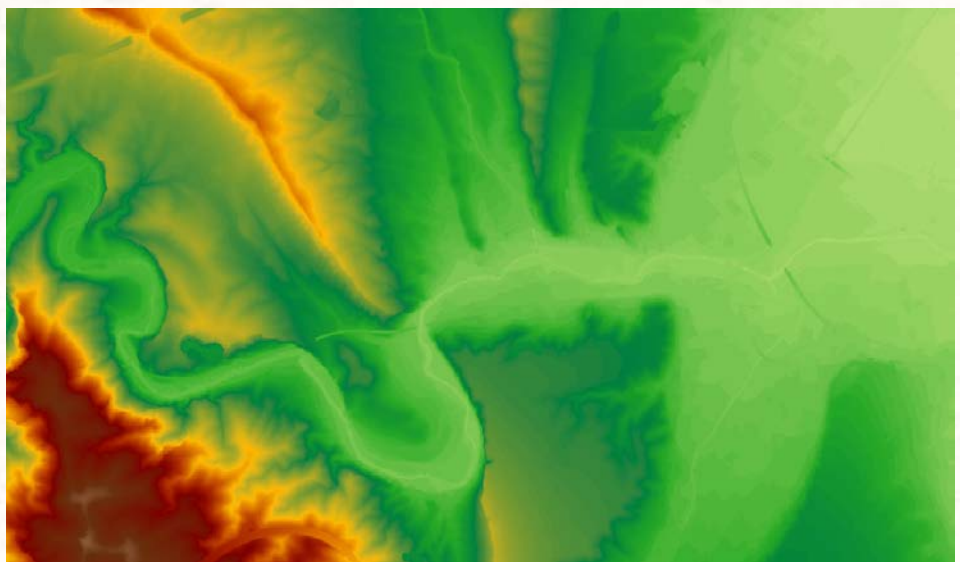
- SWOT analysis
 - Updated
- Workplan
 - Updated and on time
 - Part-time dedication
- Mobility
 - Looking for a compatible Educative Mobility
- Funding
- Ethics

Influence of the cartography on the results of two-dimensional hydraulic models

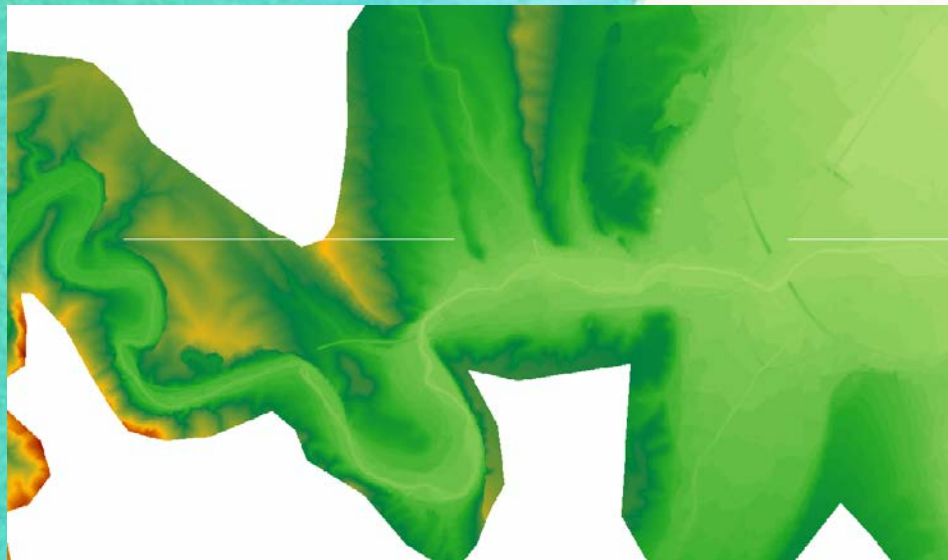




ASTER



LiDAR 5 m



LiDAR 1m



Level Errors

Comparison between different cartographies